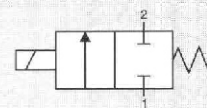


CONTROL:

PFM

PWM

N. 1 NC



## GENERAL CHARACTERISTICS

FLUID	Non-lubricated dry air, neutral gases(-10 + 50°C)
FILTRATION RATING	Min 40 micron
TEMPERATURE	- 10 + 50°C (Standard version)
RESPONSE TIME IN OPENING	XX / KK / YY < 1ms
RESPONSE TIME IN CLOSING	XX / KK / YY < 1ms
MAXIMUM FREQUENCY	200 Hz
WEIGHT	< 80 g
PRODUCT LIFE EXPECTANCY	≥ 500 M/s cycles
IP RATING	IP 62

## IDENTIFICATION CODE

D	R	X	8	4	1	1	0	0	C	2	YY
---	---	---	---	---	---	---	---	---	---	---	----

• OUTLETS

1	1 Outlet
---	----------

• FLOW RATE (at 6 bar)

R	300 Nlm

• VERSION

J	Manifold with HNBR flaps
D	Manifold with NBR flaps

• No. ELECTRICAL CONTROLS

1	1 Control (XX / KK)
2	2 Controls (XX / KK)
H	1 Control with integrated speed-up driver (YY)

• PORT CONNECTION

0	Integrated cables IP 62 L = 500 mm
E	Easy connection

• FUNCTION

C	NC
---	----

• TYPE

2	2/2
---	-----

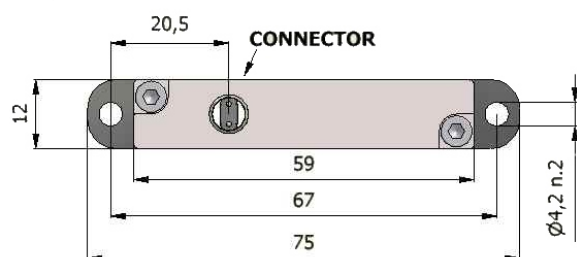
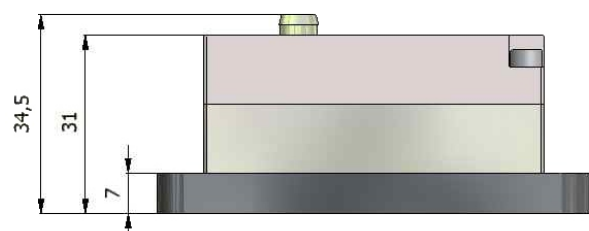
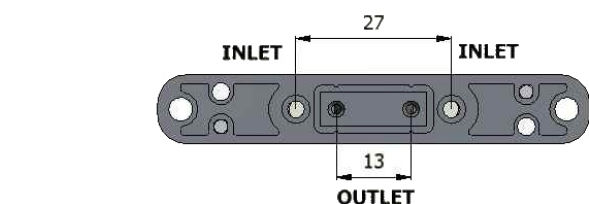
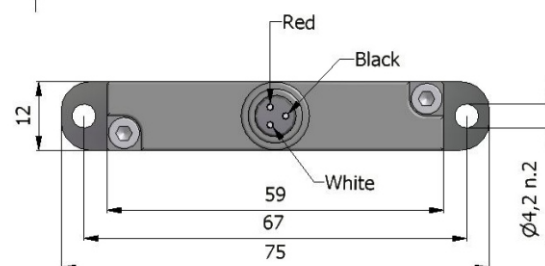
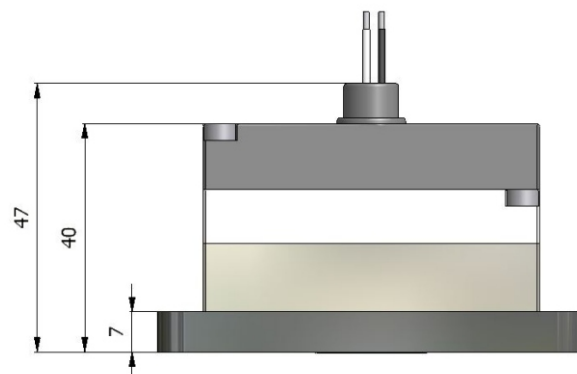
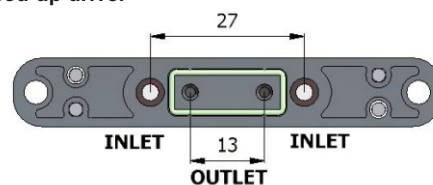
• CONTROL TENSION

XX	Speed-up in current (24 VDC)	2.1 W
KK	Speed-up in tension (24 VDC)	1.2 W
YY	Integrated speed-up driver	3.2 W

• OPERATING PRESSURE

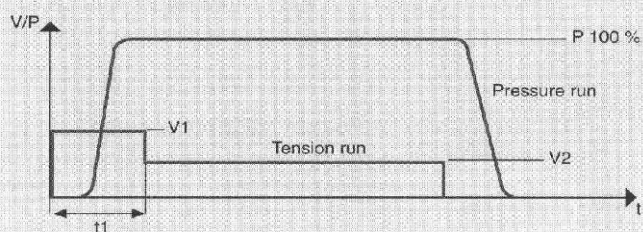
	RANGE	MODELS
0	2 - 8 bar	XX
4	0 - 6 bar	XX
8	2 - 6 bar	All



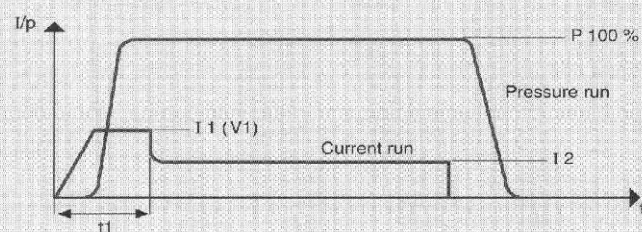
**MANIFOLD VERSION**  
**"Easy Connection"**

**MANIFOLD VERSION**  
**"Integrated speed-up driver"**

**ACCESSORIES**

Reference	Quantity	Description

NOTE: Inch size available

**CHARACTERISTICS OF THE ELECTRICAL CONTROL - MODELS KK**

**N.B. KK MODELS ARE CONTROLLED IN TENSION**

R	V 1 = 24 VDC	t 1 = 5 ms	V 2 = 4 VDC

**CHARACTERISTICS OF THE ELECTRICAL CONTROL - MODELS XX**

**N.B. XX MODELS ARE CONTROLLED IN CURRENT**

R	I 1 = 3.2 A	t 1 = 3 ms	I 2 = 0.53 A

**FLOW RATE** **R**
