

The SPR 600 is an electronically-controlled pressure regulator equipped with an 8-bit microcontroller in combination with a 1" or 3/4" pilot-assisted pressure regulator (power stage). The control signal can be analogic, digital via RS232 or digital from the keyboard. It is converted into a proportional pressure signal by means of high-rate solenoid valves.

The advantages are:

- Integration with analogic or digital control systems (PC, PLC, etc.)
- Extremely fast response times
- Excellent repeatability and reliability
- Low power absorption

SPR 600 comes in two basic versions:

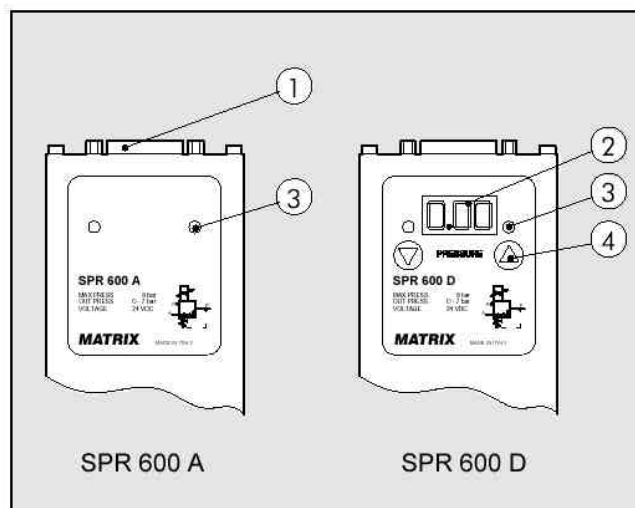
- Version A, with analogic control via voltage or RS232 serial line.
- Version D, with control via RS232 serial line or keyboard and voltage, with display of the set and regulated pressures.



TECHNICAL DATA		SPR 600 A and D	
Setting range	MPa		0.03 - 0.7
	bar		0.3 - 7
	psi		4 - 100
Control pressure	MPa		0.1 - 0.8
	bar		1 - 8
	psi		15 - 115
Temperature range	°C		-10°C to +50°C
	°F		14 - 122
Degree of protection			IP62 or IP65
Weight	Kg		2.5
Fluid			20 µm filtered air, de-humidified and unlubricated.
Supply voltage			24 V DC
Max. absorbed power	W		2
Control			KEYBOARD / 0-5V / 0-10V / RS 232
Flow rate at 6.3 bar ΔP 0.5 bar	NI/min		12000
			-
			-
			-

COMPONENTS

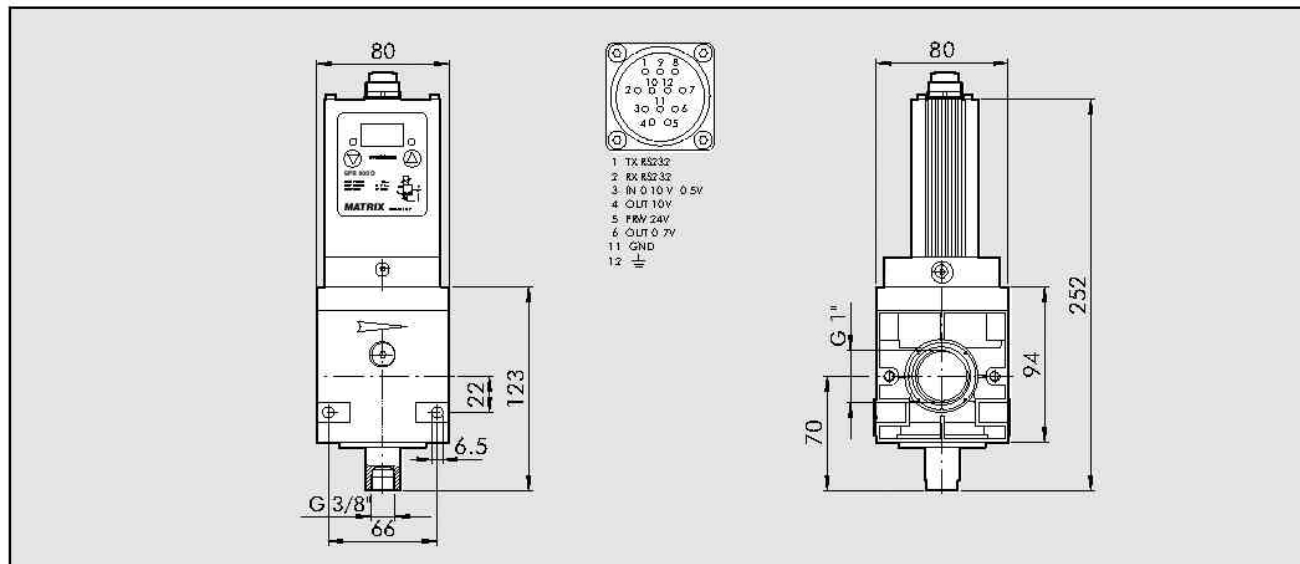
- ① Connection for power supply and serial line
- ② 3-digit digital display
- ③ Led
- ④ Instrument configuration and pressure setting keys



SPR 600 A/D

MATRIX
mechatronics

DIMENSIONS



NOTES