



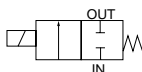
2 port direct acting solenoid valve : Open when energized, close when energized

## GENERAL PURPOSE VALVE AB31·AB41·AB42 SERIES Discrete valve

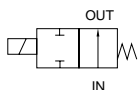
- Direct acting poppet structure
- Port size : Rc1/8, Rc1/4, Rc3/8, Rc1/2

### JIS symbol

- AB31/41 (normally closed)



- AB42 (normally open)



### Common specifications

Descriptions	Standard specifications		Optional specifications	
Working fluid	Air, gas, low vacu(1.33X102Pa), water, kero, oil (50mm²/s or less)		Hot water	Steam
Working pressure diff. range MPa	0 to 5 (refer to max. working pressure differential on individual specifications.)			
Withstanding pressure (water) MPa	25			
Fluid temperature °C	-10 to 60 (no freezing)		-10 to 90	-10 to 184
Ambient temperature °C	-20 to 60		-20 to 100	
Insulation class	Class B		Class H	
Atmosphere	No corrosive gas and flammable place			
Valve structure	Direct acting poppet structure			
Valve seat leakage (JIS leakage standard)cm³/min	0		300 or less (compressed air and PTFE sealing)	
Installation attitude	Free			

- PTFE sealing when steam.

### Individual specifications

Descriptions Series	Port size	Orifice (mm)	Cv flow factor	Effec. Sec. Area (mm²)	Max. working pressure diff. (MPa)								Max. working pressure (MPa)	Rated voltage	Apparent power (VA)		Power consumption (W)		Mass (kg)								
					Air		Water, hot water, <small>temperature</small>		Oil (50mm²/s)		Steam				Holding	Starting	AC	DC									
					AC	DC	AC	DC	AC	DC	AC	DC															
Open when energized : NC type																											
AB31-01/02-1	Rc1/8 Rc1/4	1.5	0.1	1.8	2.5	2.5	2.5	2.5	2.5	2.5	1.0	5 1 (when steam)	AC100V 50/60Hz	12	10	17	14	5.2/3.8	11 (8.1)	0.35							
AB31-01/02-2		2.0	0.15	2.7	1.5	1.5	1.5	1.5	1.5	1.5	1.0																
AB31-01/02-3		3.0	0.31	6.2	1.0	0.5	0.7	0.5	0.5	0.5	0.7																
AB31-01/02-4		3.5	0.42	8.2	0.6	0.4	0.5	0.4	0.4	0.4	0.5																
AB31-01/02-5		4.0	0.54	10.5	0.4	0.25	0.3	0.25	0.25	0.25	0.3																
AB31-01/02-6	Rc1/4 Rc3/8	5.0	0.8	15.3	0.2	0.15	0.15	0.15	0.15	0.15	0.15	18	15	29	24	6.7/5.7	11 (10.4)	0.43 (Rc1/4) 0.45 (Rc3/8)									
AB41-02/03-1		1.5	0.1	1.8	5.0	4.0	4.5	4.0	4.0	4.0	1.0																
AB41-02/03-2		2.0	0.15	2.7	3.0	2.5	2.7	2.5	2.5	2.5	1.0																
AB41-02/03-3		3.0	0.31	6.2	1.5	0.9	1.3	0.9	0.9	0.9	1.0																
AB41-02/03-4		3.5	0.42	8.2	1.2	0.6	0.9	0.6	0.6	0.6	0.9																
AB41-02/03-5	Rc3/8 Rc1/2	4.0	0.54	10.5	1.0	0.5	0.7	0.5	0.5	0.5	0.7	-	AC200V 50/60Hz	18	15	29	24	6.7/5.7	11 (10.4)	0.45 (Rc3/8)							
AB41-02/03-6		5.0	0.8	15.3	0.6	0.25	0.4	0.25	0.25	0.25	0.4																
AB41-02/03-7		7.0	1.0	26.4	0.25	0.1	0.2	0.1	0.15	0.1	0.2																
AB41-03/04-8	Rc3/8 Rc1/2	10.0	1.88 <1.5>	40.6 <27.6>	0.1	0.05 (0.03)	0.1	0.05 (0.03)	0.05	0.05 (0.03)	-	DC12V DC24V DC48V DC100V	22	18	35	29	8.7/6.7	15.5 (14)	0.50 (Rc1/4) 0.52 (Rc3/8)								
Closed when energized : NO type																											
AB42-02/03-1	Rc1/4 Rc3/8	1.5	0.1	1.8	2.0	2.0	2.0	2.0	2.0	2.0	1.0	2 1 (when steam)								DC12V DC24V DC48V DC100V	22	18	35	29	8.7/6.7	15.5 (14)	0.50 (Rc1/4) 0.52 (Rc3/8)
AB42-02/03-2		2.0	0.15	2.7	1.0	1.0	1.0	1.0	1.0	1.0	1.0																
AB42-02/03-3		3.0	0.31	6.2	0.7	0.7	0.7	0.7	0.7	0.7	0.7																
AB42-02/03-4		3.5	0.4	7.5	0.5	0.5	0.5	0.5	0.5	0.5	0.5																
AB42-02/03-5		4.0	0.47	8.9	0.4	0.4	0.4	0.4	0.4	0.4	0.4																
AB42-02/03-6	Rc3/8 Rc1/2	5.0	0.63	12.5	0.25	0.25	0.25	0.25	0.25	0.25	0.25	-	DC12V DC24V DC48V DC100V	22	18	35	29	8.7/6.7	15.5 (14)	0.50 (Rc1/4) 0.52 (Rc3/8)							
AB42-02/03-7		7.0	1.0	21.1	0.15	0.15	0.15	0.15	0.15	0.15	0.15																
AB42-02/03-8		7.0	1.0	21.1	0.15	0.15	0.15	0.15	0.15	0.15	0.15																

- 1 : Models above show basic port size and orifice. See "How to order" about other combinations (for steam etc.).

- 2 : In port size, 01 shows Rc1/8 (6A), 02 shows Rc1/4 (8A), 03 shows Rc3/8 (10A), 04 shows Rc1/2 (15A).

- 3 : < > shows values of stainless steel body. When other series but stainless steel body, Cv flow factor and effective sectional area are same as GAB type.

- 4 : Refer to DC column for maximum working pressure differential of coil with diode.

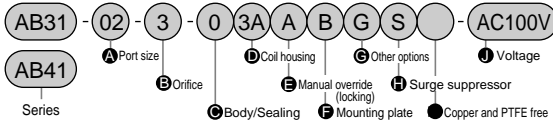
- 5 : Variation of rated voltage should be within ±10%.

- 6 : ( ) shows the value of DIN terminal box and DC voltage specifications.



CAD DATA AVAILABLE.

## How to order



## Example 1 of model number

### AB31-02-3-AC100V

Series : AB31

A Port size : Rc1/4

B Orifice : 3mm

C Body/sealing

D Body - brass, Seal - nitrile rubber

E Coil housing : Grommet lead wire

F to I : Blank

J Rated voltage : AC 100V 50/60Hz, AC 110V 60Hz

## Example 2 of model number

### AB41-02-3-000AS-AC100V

Series : AB41

A Port size : Rc1/4

B Orifice : 3mm

C Body/sealing

D Body - brass, Seal - nitrile rubber

E Coil housing : Grommet lead wire

F Manual override (locking) : Selected

G to I : Blank

J Surge suppressor : Selected

K Rated voltage : AC 100V 50/60Hz, AC 110V 60Hz

- 1 : Circles on "A" to "C" and symbols on "D" to "J" show available combinations.
- 2 : G and NPT are available for port thread.
- 3 : See P.45 to 50 in introduction to check compatibility.
- 4 : Blank is standard, however "D", "E", "F", "G", "H" or "I" selected, complete "C" with 0.
- 5 : Bronze (standard) body or stainless steel (optional) for low pressure large flow rate AB41-02-8.
- 6 : When "C" Body/Sealing of low pressure large flow rate AB41-02-8 is V or W, DC voltage isn't available.
- 7 : Tropic care treatment (rust proof coating) is available.

Symbol	Description	AB31	AB41	AB41 Low pressure large flow rate
A Port size	01 Rc1/8	●		
	02 Rc1/4		●	
	03 Rc3/8		●	●
	04 Rc1/2			●
B Orifice	1 1.5mm	●	●	
	2 2mm	●	●	
	3 3mm	●	●	
	4 3.5mm	●	●	
	5 4mm	●	●	
	6 5mm	●	●	
	7 7mm		●	
	8 10mm			●
C Body/Sealing	Blank STD			
	B Brass			
	C Nitrile rubber	●	●	●
	D Fluoro rubber	●	●	●
	E PTFE	●	●	●
	F Ethylene propylene rubber	●	●	●
	G Fluoro rubber	●	●	●
	H Vacuum	●	●	●
	I Stainless steel			
	J Nitrile rubber	●	●	●
	K Fluoro rubber	●	●	●
	L PTFE	●	●	●
	M Ethylene propylene rubber	●	●	●
	N Fluoro rubber	●	●	●
	O Vacuum	●	●	●
	P Stainless steel			

D Coil housing			E	F	G Other options				H	I	J Rated voltage	
Descriptions			Manual operation (Locking)	Mounting plate	Cable gland		Conduit		Surge suppressor	Copper and PTFE free	Descriptions	
					(Marine cable gland)	(Conduit pipe)						
			A-15a	A-15b	A-15c	CTC 19	G1/2					
Blank	Option	Grommet lead wire		A	B			G	H	S	AC 100V, AC 200V	
2E		DIN terminal box (G1/2)									AC 100V, AC 200V DC12V, DC24V, DC48V, DC100V	
2G		DIN terminal box (Pg11)									AC 100V, AC 200V, DC24V	
2H		DIN terminal box + small light (Pg11)									AC 100V, AC 200V	
3A		Open frame	Lead wire	A	B			G	H		AC 100V, AC 200V DC12V, DC24V, DC48V, DC100V	
3K			Square terminal box (G1/2)			D	E				F	AC 100V, AC 200V, DC 24V, DC 100V
3H			Square terminal box + light (G1/2)									
4A		Open frame (Class H coil)	Lead wire	A	B			G	H		AC 100V, AC 200V	
4K			Square terminal box (G1/2)			D	E				F	
4H			Square terminal box + light (G1/2)									
5A	Open frame (Diode)	Lead wire	A	B			G	H	AC 100V, AC 200V			
5K		Square terminal box (G1/2)			D	E				F		
5H		Square terminal box + light (G1/2)										

- 8 : See P.120 about coil selection.
- 9 : Standard coil housing is blank, however "E", "F", "G", "H" or "I" selected, complete "D" with 00.
- 10 : 5A,5K and 5H are diode rectification coils.
- 11 : Water proof is available for square terminal box coil (except Class H).
- 12 : When using with steam, indicate "C" and "D" as C4A, C4K or C4H.
- 13 : Steam proof DC coil is available for AB41.

- 14 : Blank when no item selected from "E", "F", "G", "H" and "I".
- 15 : Manual override("E" A) isn't available for low pressure large flow rate AB41-03/04-8.
- 16 : When "C" is C, F, K, N, V or W, manual override ("E" A) isn't available.
- 17 : Select one among D, E, F, G and H for "G".
- 18 : When lead wire coil, surge suppressor is attached, while terminal box coil, mounted in the terminal box.
- 19 : Surge suppressor is incorporated in coil with diode and "D" 2H DC24V coil as standard.

- 20 : "I" P6 is available only when "C" is L, M or R.
- 21 : AC100V coil is compatible with AC100V50/60Hz, AC110V60Hz, and AC200V coils compatible with AC200V50/60Hz, AC220V60Hz. Use "D" 5A,5K,5H coils only for AC100V50/60Hz, AC200V50/60Hz.
- 22 : Consult with CKD about other than above voltage.
- 23 : When lead wire length exceeding standard 300mm, custom length is available per 500mm increment.

# AB31-41-42 Series

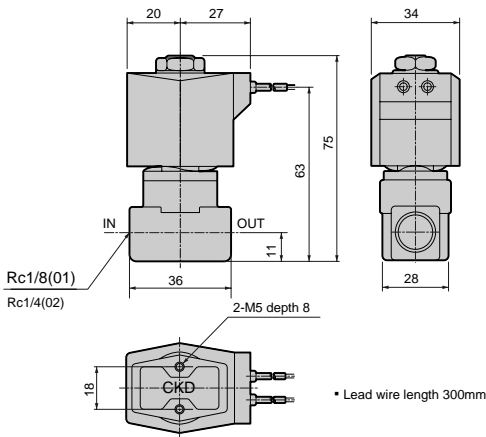
## AB31 series dimensions

- Grommet lead wire type  
AB31-01/02-1 to 6



(File name : Page 228 to 232 or Ending 19 to 23)

Note 1 : This AB31series, 2 port solenoid valve, open when energized, is designed to meet the customer's requirement according to working fluid, body, seal materials, relation between flow rate and the pressure (converted to orifice diameter and pressure), and ambient temperature and conditions (converted to coil specifications).



## AB31 series optional dimensions

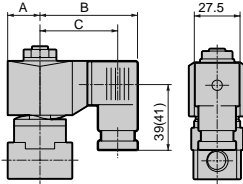
- DIN terminal box

AB31-01/02-1 to 6- \* 

2E
2G
2H



(File name : Page 228 to 232 or Ending 19 to 23)



Dimensions in ( ) show value of G1/2

Voltage	A	B	C
AC	20	62	50.5(50)
DC	21	63.5	52(51.5)

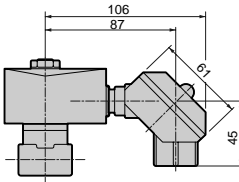
- Open frame + square terminal box

AB31-01/02-1 to 6- \* 

3	K
4	H
5	



(File name : Page 228 to 232 or Ending 19 to 23)

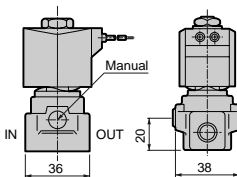


- Manual override(locking)

AB31-01/02-1 to 6- \* \* \* A



(File name : Page 228 to 232 or Ending 19 to 23)



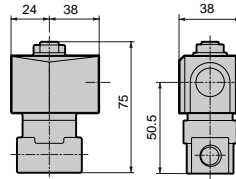
- Open frame lead wire type

AB31-01/02-1 to 6- \* 

3A
4A
5A



(File name : Page 228 to 232 or Ending 19 to 23)



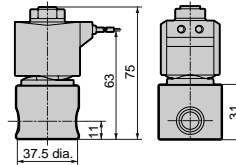
- Stainless steel body

AB31-01/02-1 to 6- 

D/E/F/R/W/L/M/N
-----------------



(File name : Page 228 to 232 or Ending 19 to 23)

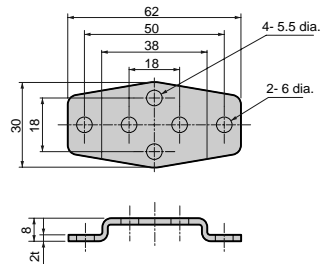


- Mounting plate

AB31-01/02-1 to 6- \* \* \* B



(File name : Page 228 to 232 or Ending 19 to 23)



Mounting plate No.1 GE-100106

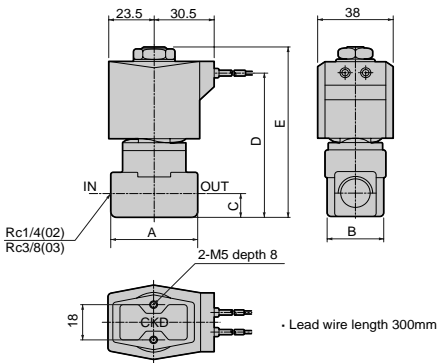
# AB31-41-42 Series

## AB41 series dimensions

- Grommet lead wire type  
AB41-02/03-1 to 7



(File name : Page 228 to 232 or Ending 19 to 23)

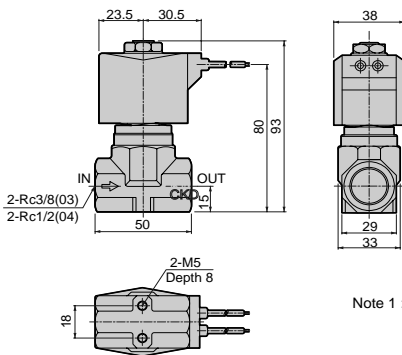


Model	A	B	C	D	E
AB41-02-1 to 6	36	28	11	68.0	80.5
AB41-02-7 -03-1 to 7	40	28	12	71.0	83.5

- Grommet lead wire type  
AB41-03/04-8



(File name : Page 228 to 232 or Ending 19 to 23)



Note 1 : This AB41 series, 2 port solenoid valve, open when energized, is designed to meet the customer's requirement according to working fluid, body and seal materials, relation between flow rate and the required pressure (converted to orifice diameter and pressure), and ambient temperature and conditions (converted to coil specifications).

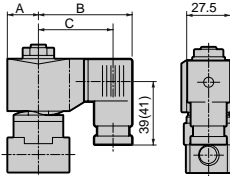
## AB41 series optional dimensions

- DIN terminal box

AB41-02/03/04-1to 8-\*

2E
2G
2H

**CAD** (File name : Page 228 to 232 or Ending 19 to 23)



Dimensions in ( ) show value of G1/2

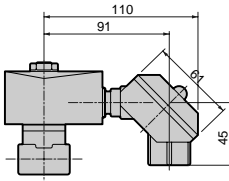
Voltage	A	B	C
AC	23.5	65.5	54(53.5)
DC	23.5	66	54.5(54)

- Open frame + square terminal box

AB41-02/03/04-1to 8-\*

3 K
4 H
5

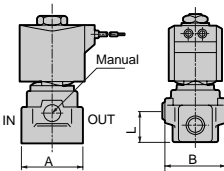
**CAD** (File name : Page 228 to 232 or Ending 19 to 23)



- Manual override(locking)

AB41-02/03-1to 7-\*\*\*A

**CAD** (File name : Page 228 to 232 or Ending 19 to 23)



Note : No manual override available for AB41-03/04-8.

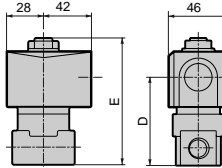
Model	A	B	L
AB41-02-1to 6-***A	36	38	20
AB41-02-7-***A -03-1 to 7- *** A	40	40	23

- Open frame lead wire type

AB41-02/03/04-1to 8-\*

3A
4A
5A

**CAD** (File name : Page 228 to 232 or Ending 19 to 23)

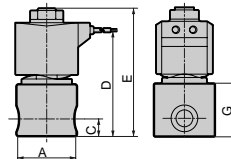


Model	D	E
AB41-02-1to6-* [ J A	52.0	80.5
AB41-02-7-* [ J A -03-1 to 7- * [ J A	55.0	83.5
AB41-03/04-8-* [ J A	64	93

- Stainless steel body

AB41-02/03/04-1to8- D/F/R/W/L/M/N/E

**CAD** (File name : Page 228 to 232 or Ending 19 to 23)

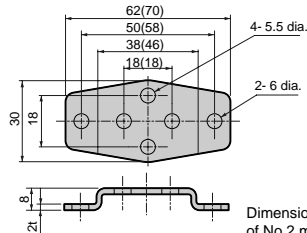


Model	A	C	D	E	G
AB41-02-1 to 6- *	37.5 dia.	11	68.0	80.5	31
AB41-02-7- * -03-1 to 7- *	45.0 dia.	12	71.0	83.5	34
AB41-03/04-8- *	54.0 dia.	15	80	93	—

- Mounting plate

AB41-02/03/04-1to 8-\*\*\*B

**CAD** (File name : Page 228 to 232 or Ending 19 to 23)



Model	Model
Mounting plate No.1	AB41-02/03-1 to 7 series Stainless steel body AB41-02-1 to 6- D/E/F/L/M/N/R/W
Mounting plate No.2	AB41-03/04-8 series Stainless steel body AB41-02-7- D/E/F/L/M/N/R/W AB41-03-1 to 7- D/E/F/L/M/N/R/W
GE-100159	

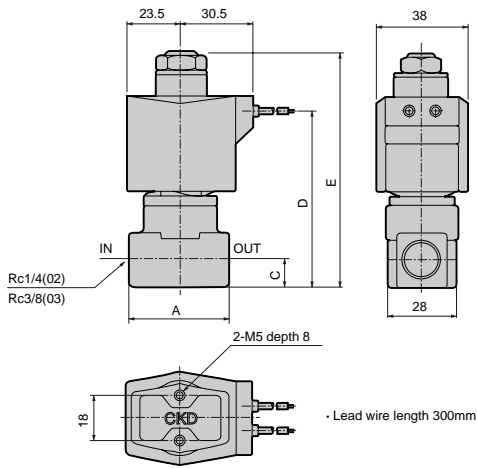
# AB31·41·42 Series

## AB42 series dimensions

- Grommet lead wire  
AB42-02/03-1 to 7



(File name : Page 228 to 232 or Ending 19 to 23)



<References> 2 port direct acting valve, closed when energized, is open when de-energized. This type is commonly used to be continuously energized.

Model	A	C	D	E
AB42-02-1 to 6	36	11	72	94
AB42-02-7	40	12	75	97
AB42-03-1 to 7	40	12	75	97

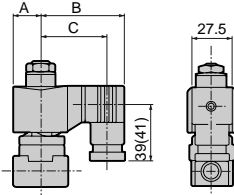
## AB42 series optional dimensions

### • DIN terminal box

AB42-02/03-1 to 7- \* 

2E
2G
2H

**CAD** (File name : Page 228 to 232 or Ending 19 to 23)



Dimensions in ( ) show value of G1/2

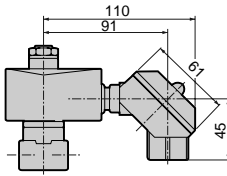
Voltage	A	B	C
AC	23.5	65.5	54(53.5)
DC	28	72	60.5(60)

### • Open frame + square terminal box

AB42-02/03-1 to 7- \* 

3	K
4	H
5	

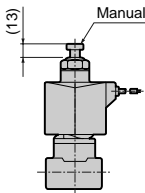
**CAD** (File name : Page 228 to 232 or Ending 19 to 23)



### • Manual override(locking)

AB42-02/03-1 to 7- \* \* \* A

**CAD** (File name : Page 228 to 232 or Ending 19 to 23)

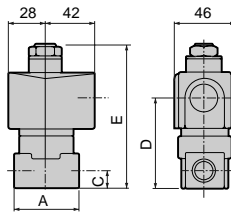


### • Open frame lead wire type

AB42-02/03-1 to 7- \* 

3A
4A
5A

**CAD** (File name : Page 228 to 232 or Ending 19 to 23)



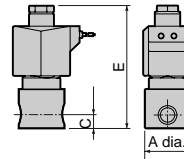
Model	A	C	D	E
AB42-02-1 to 6	36	11	56	94
AB42-02-7	40	12	59	97
AB42-03-1 to 7	40	12	59	97

### • Stainless steel body

AB42-02/03-1 to 7- 

D/E/F/R/W/L/M/N
-----------------

**CAD** (File name : Page 228 to 232 or Ending 19 to 23)

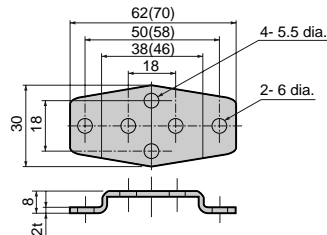


Model	A	C	E
AB42-02-1 to 6	37.5	11	94
AB42-02-7	45.0	12	97
AB42-03-1 to 7	45.0	12	97

### • Mounting plate

AB42-02/03-1 to 7- \* \* \* B

**CAD** (File name : Page 228 to 232 or Ending 19 to 23)



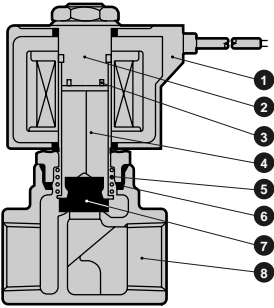
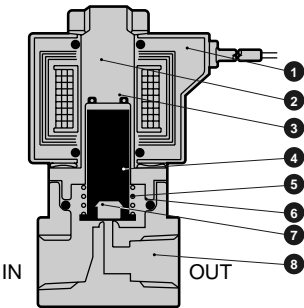
Dimensions in ( ) show value of No.2 mounting plate

Code	Model																
Mounting plate No.1 GE-100106	• AB42-02/03-1 to 7 series • Stainless steel body AB42-02-1 to 6- <table border="1"><tr><td>D</td><td>E</td><td>F</td><td>L</td><td>M</td><td>N</td><td>R</td><td>W</td></tr></table>	D	E	F	L	M	N	R	W								
D	E	F	L	M	N	R	W										
Mounting plate No.2 GE-100159	• Stainless steel body AB42-02-7- <table border="1"><tr><td>D</td><td>E</td><td>F</td><td>L</td><td>M</td><td>N</td><td>R</td><td>W</td></tr></table> AB42-03-1 to 7- <table border="1"><tr><td>D</td><td>E</td><td>F</td><td>L</td><td>M</td><td>N</td><td>R</td><td>W</td></tr></table>	D	E	F	L	M	N	R	W	D	E	F	L	M	N	R	W
D	E	F	L	M	N	R	W										
D	E	F	L	M	N	R	W										



Internal structure and main parts materials

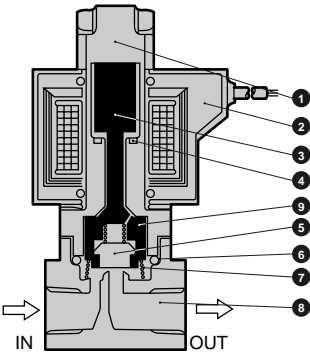
- AB31 series
- AB41-02/03-1 to 7
- AB41-03/04-8



No.	Parts name	Material		No.	Parts name	Material	
1	Coil	Class B mold (Class H taped)	—	5	Spring	SUS304	Stainless steel
2	Core assembly	SUS405/316L/403	Stainless steel	6	O ring	NBR(FKM/EPDM/PTFE) (AS568/019)	NBR : Nitrile FKM : Fluoro rubber EPDM : Ethylene propylene PTFE : Tetrafluoroethylene
3	Shading coil	Cu (Ag when SUS body)	Copper (silver when stainless steel body)	7	Seal	NBR(FKM/EPDM/PTFE)	PTFE : Tetrafluoroethylene
4	Plunger	SUS405	Stainless steel	8	Body	C3771 or BC6 (SUS303)	Brass or bronze (stainless steel)

( ) shows options. PTFE isn't available for AB41-<sup>03</sup><sub>04</sub> 8.

- AB42

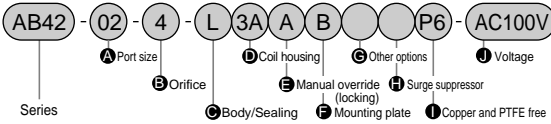


NO.	Parts name	Material		No.	Parts name	Material	
1	Core assembly	SUS405/316L/403	Stainless steel	6	O ring	NBR(FKM/EPDM/PTFE) (AS568/019)	NBR: Nitrile rubber EPDM: Ethylene propylene FKM: Fluoro rubber PTFE: Tetrafluoroethylene
2	Coil	Class B mold (Class H taped)	—	7	Spring	SUS304	Stainless steel
3	Plunger	SUS405	Stainless steel	8	Body	C3771(SUS303)	Brass (stainless steel)
4	Shading coil	Cu (Ag when SUS body)	Copper (silver when stainless steel body)	9	Plunger guide	POM(PTFE)	Polycetal resin (tetrafluoroethylene when hot water, steam)
5	Seal	NBR(FKM/EPDM/PTFE)	NBR: Nitrile rubber EPDM: Ethylene propylene FKM: Fluoro rubber PTFE: Tetrafluoroethylene				

( ) shows options.

# AB31-41-42 Series

## How to order



## Example 1 of model number

### AB42-02-1-AC100V

Series : AB42

- Port size : Rc1/4
- Orifice : 1.5mm
- Body/sealing : Body - brass, Seal - nitrile rubber
- Coil housing : Grommet lead wire
- to : Blank
- Rated voltage : AC 100V 50/60Hz, AC 110V 60Hz

## Example 2 of model number

### AB42-03-6-000AS-AC100V

Series : AB42

- Port size : Rc3/8
- Orifice : 5mm
- Body/sealing : Body - brass, Seal - nitrile rubber
- Coil housing : Grommet lead wire
- Manual override (locking) : Selected
- to : Blank
- Surge suppressor : Selected
- Rated voltage : AC 100V 50/60Hz, AC 110V 60Hz

1 : See P.45 to 50 in introduction to check compatibility.

2 : G and NPT are available for port thread.

3 : Blank is standard, however "D", "E", "F", "G", "H" or "I" selected, complete "C" with 0.

4 : Tropic care treatment (rust proof coating) is available.

Symbol		Description								
A	02	Rc1/4								
	03	Rc3/8								
B	1	1.5mm								
	2	2mm								
	3	3mm								
	4	3.5mm								
	5	4mm								
	6	5mm								
	7	7mm								
C	Blank	STD	Nitrile rubber	-	Air, gas, low vacuum, water, kerosene					
	B	Brass	Fluoro rubber		Heat proof					
	C		PTFE		Steam					
	P		Ethylene propylene rubber	Oil-prohibit	Hot water, alcohol					
	V	Stainless steel	Fluoro rubber	Vac. inspec.	Medium vacuum					
	D		Nitrile rubber	-	Air, gas, low vacuum, water, kerosene					
	E		Fluoro rubber		Heat proof					
	F	PTFE	Solvent							
	R	Stainless steel	Ethylene propylene rubber	Oil-prohibit						
	W		Fluoro rubber	Vac. inspec.	Medium vacuum					
	H		Nitrile rubber	Oil-prohibit						
	J	Fluoro rubber								
	K	PTFE								
	L	Nitrile rubber								
	M	Fluoro rubber								
	N	PTFE								
	D Coil housing				E	F	G Other options			
	Descriptions				Manual operation (Locking)	Mounting plate	Cable gland		Conduit	
(Marine cable gland)							(Conduit pipe)			
						A-15a	A-15b	A-15c	CTC 19	G1/2
Blank	STD	Grommet lead wire		A	B					
2E	Option	DIN terminal box (G1/2)								
2G		DIN terminal box (Pg11)								
2H		DIN terminal box + small light (Pg11)								
3A		Open frame	Lead wire							
3K	Square terminal box (G1/2)									
3H	Square terminal box + light (G1/2)									
4A	Open frame (Class H coil)		Lead wire							
4K		Square terminal box (G1/2)								
4H		Square terminal box + light (G1/2)								
5A		Open frame (Diode)	Lead wire							
5K	Square terminal box (G1/2)									
5H	Square terminal box + light (G1/2)									

- 5 : See P.120 about coil selection.
- 6 : Standard coil housing is blank, however "E", "F", "G", "H" or "I" selected, complete "D" with 00.
- 7 : 5A,5K and 5H are diode rectification coils.
- 8 : Water proof is available for square terminal box coil (except Class H).
- 9 : When using with steam, indicate "C" and "D" as C4A, C4K or C4H.
- 10 : Steam proof DC coil is available.
- 11 : Blank when no item selected from "E", "F", "G", "H" and "I".
- 12 : When "C" is C, F, K, N, V or W, manual override ("E" A) isn't available.
- 13 : Select one among D, E, F, G and H for "G".
- 14 : When lead wire coil, surge suppressor is attached, while coil with terminal box, mounted in the terminal box.
- 15 : Surge suppressor is incorporated in coil with diode and 2H ("D") DC24V coil as standard.
- 16 : "I" P6 is available only when "C" is L.
- 17 : AC100V coil is compatible with AC100V50/60Hz, AC110V60Hz, and AC200V coils compatible with AC200V50/60Hz, AC220V60Hz. Use "D" 5A,5K,5H coils only for AC100V50/60Hz, AC200V50/60Hz.
- 18 : Consult with CKD about other than above voltage.
- 19 : When lead wire length exceeding standard 300mm, custom length is available per 500mm increment.